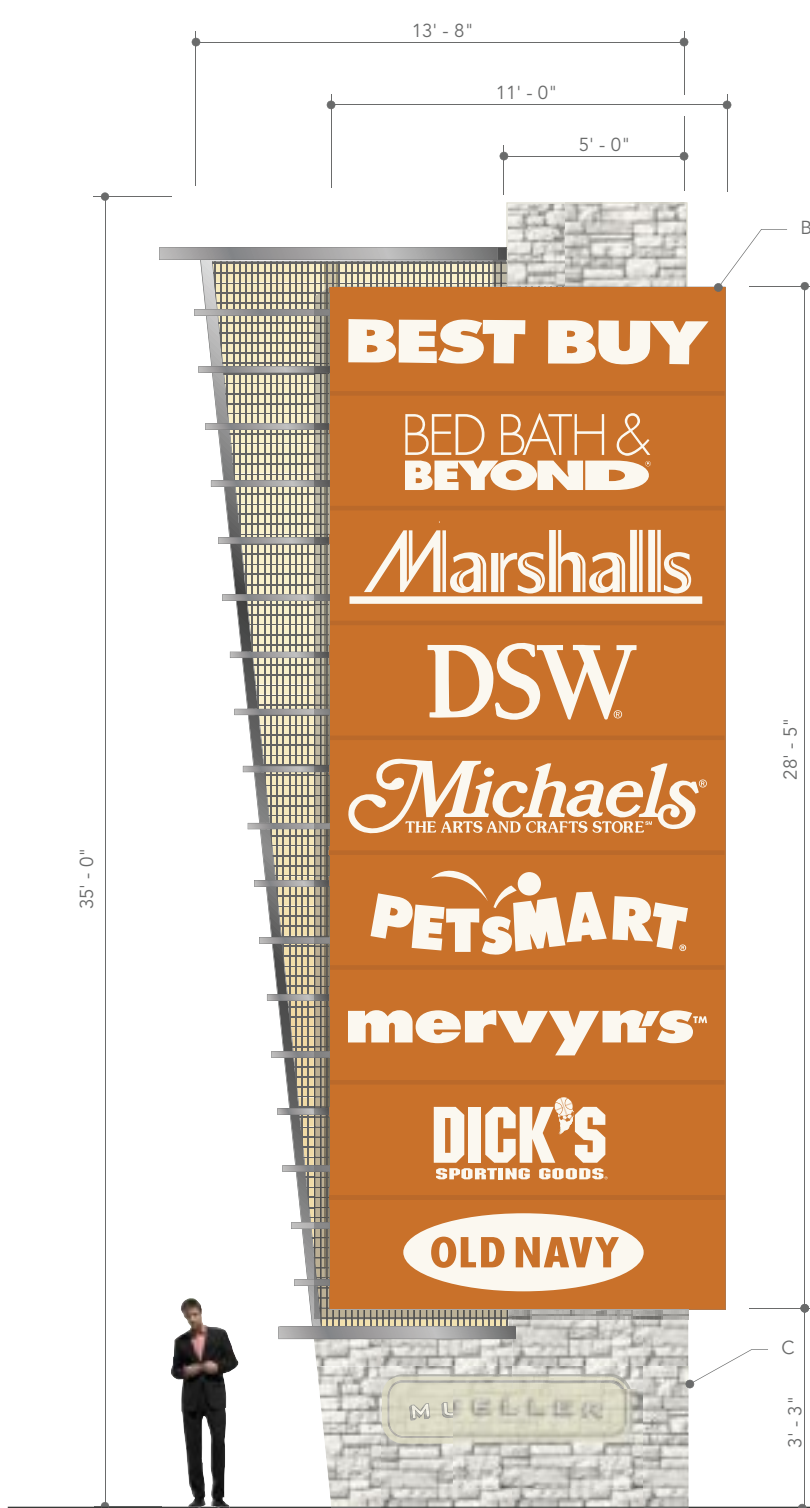
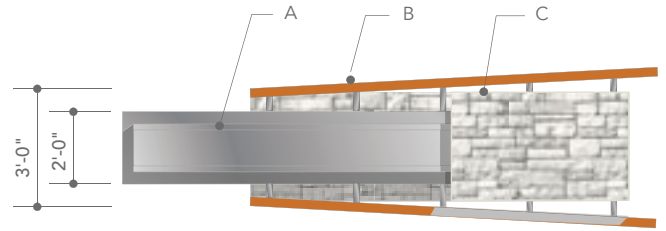


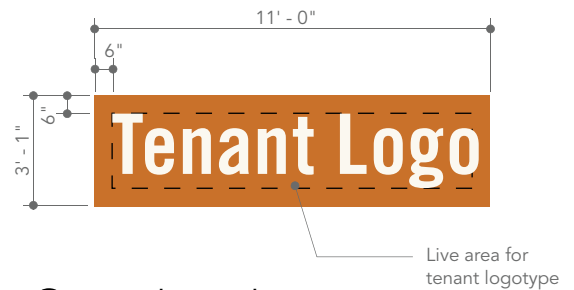
Mueller Regional Retail Environmental Graphics Section 1 - Site Signage



1 Elevation
scale: 3/16"=1'-0"



2 Top View
scale: 3/16"=1'-0"



3 Panel Detail
scale: 3/16"=1'-0"

NOTES:

A • Fabricated tube structure with metal mesh and translucent Lexan panel infill. Structure has welded metal tube ribs equally spaced over height of sign unit and corresponding to reveals between tenant sign panels. All metal finishes to match pervasive metal finish in architectural palette (refer to sign specifications). Lexan infill panels are back-illuminated with internal fixtures accessed via panel(s) located on sign cabinet face opposite Interstate 35.

B • Digitally printed tenant logotype in Mueller colors on FlexFace (or equal) material over retainer frame; panels to be back-lit with concealed LED units.

C • Limestone veneer base with canted leading face and smooth limestone logo panel.

Tenant names for illustrative purposes only.

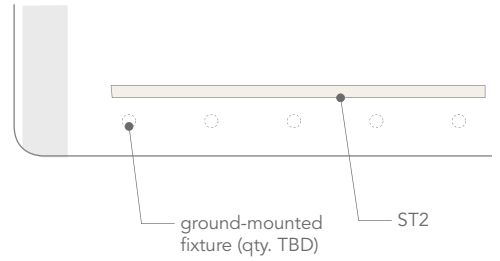
Fabrication Documentation

Drawings suggest an overall visual aesthetic. Fabricator's fabrication techniques should achieve the same visual intent. No visual changes will be acceptable.



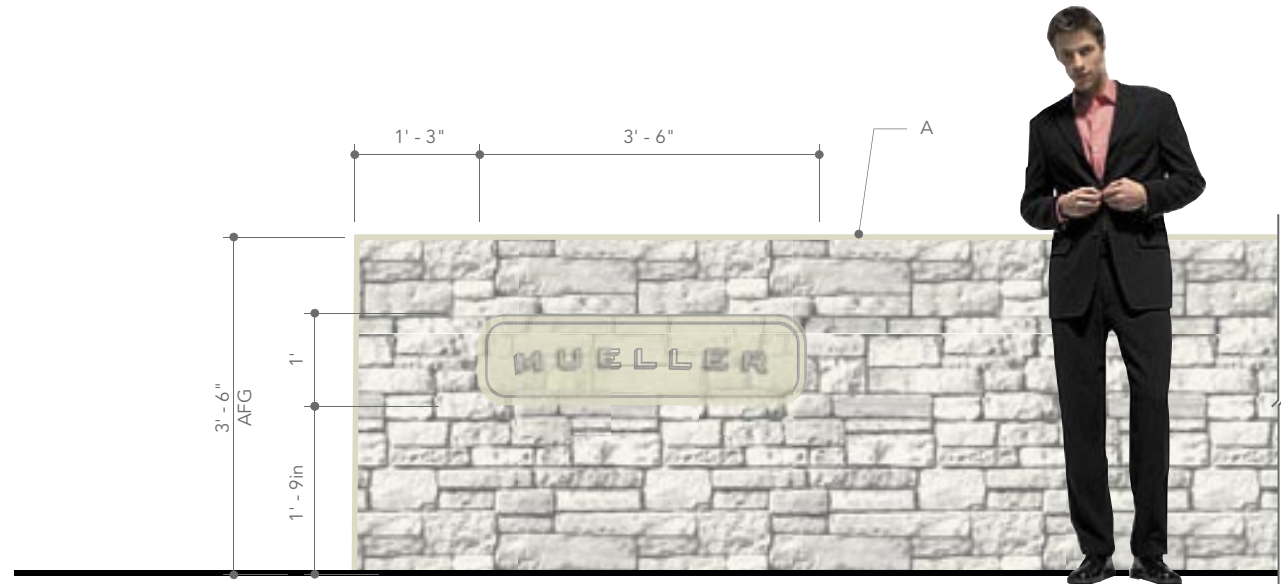
1 Entrance Elevation Diagram

scale: 1/16" = 1' - 0"



2 Entrance Elevation Diagram

scale: 1/16" = 1' - 0"



3 Elevation

scale: 1/2" = 1' - 0"

NOTES:

A - Limestone veneer wall with smooth limestone logo panel. Wall and logo illuminated by ground-mounted fixtures.

Entrance wall design pending approval by landlord.

Fabrication Documentation

Drawings suggest an overall visual aesthetic. Fabricator's fabrication techniques should achieve the same visual intent. No visual changes will be acceptable.



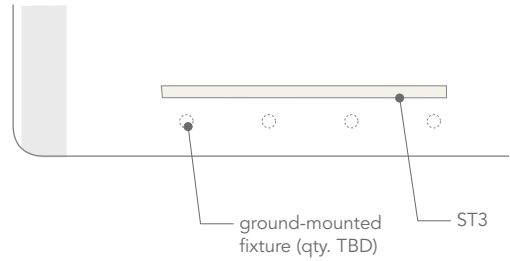
Page Title / Element Type

ST2a
Project Entrance Wall
with Identification

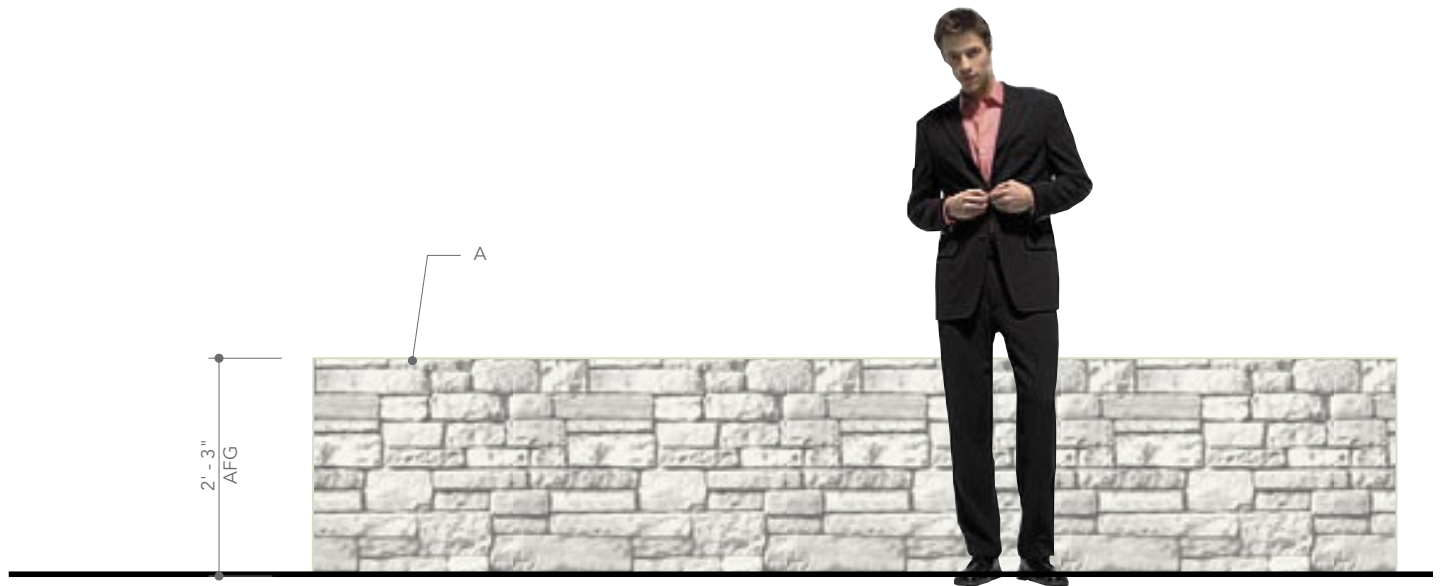
G2.0



1 Entrance Elevation Diagram
scale: 1/16" = 1' - 0"



2 Entrance Elevation Diagram
scale: 3/32" = 1' - 0"



3 Elevation
scale: 1/2" = 1' - 0"

NOTES:

A -Limestone veneer wall illuminated by ground-mounted fixtures.

Entrance wall design pending approval by landlord.

Fabrication Documentation

Drawings suggest an overall visual aesthetic. Fabricator's fabrication techniques should achieve the same visual intent. No visual changes will be acceptable.

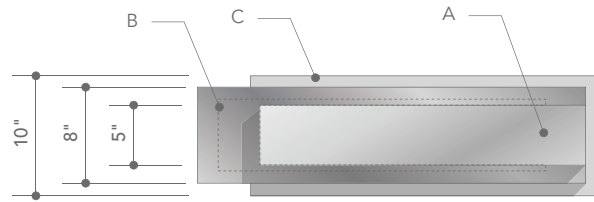
NOTES:

A - Fabricated aluminum channel frame with metal mesh (refer to sign specifications), and translucent Lexan panel infill.

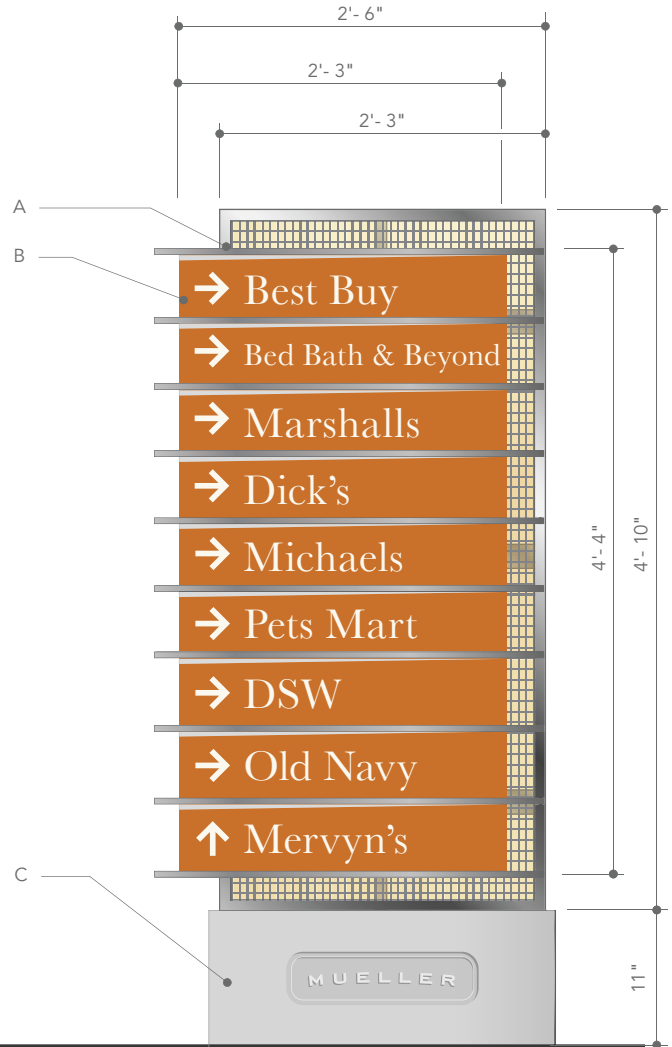
B - Painted aluminum panel with computer cut reflective vinyl type in project font, ITC New Baskerville.

C - Poured-in-place concrete base with integral cast Mueller logo; concrete surface to be smooth with no texture. Sample to be submitted to fd2s for approval.

Tenant names for illustrative purposes only.



2 Top View
scale: 1"=1'-0"



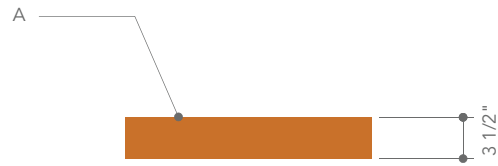
1 Elevation
scale: 3/4"=1'-0"

Fabrication Documentation

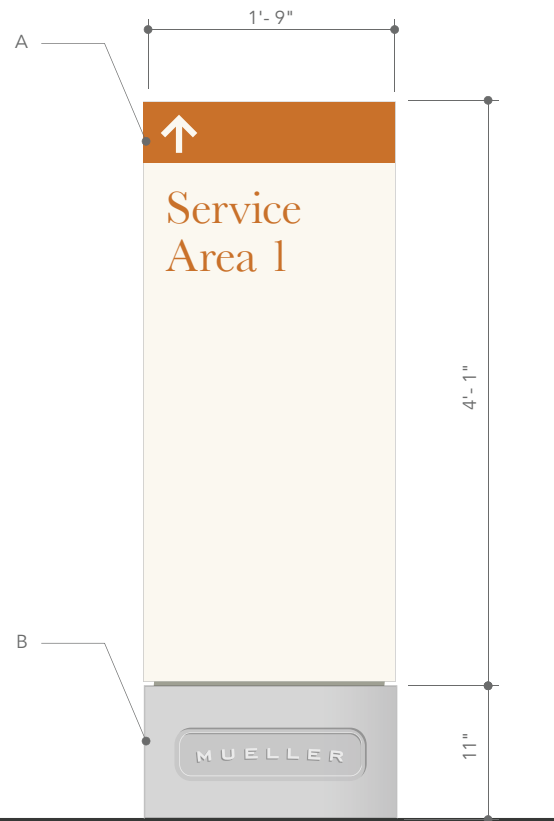
Drawings suggest an overall visual aesthetic. Fabricator's fabrication techniques should achieve the same visual intent. No visual changes will be acceptable.



1 Elevation
scale: 3/4"=1'-0"



2 Top View
scale: 3/4"=1'-0"



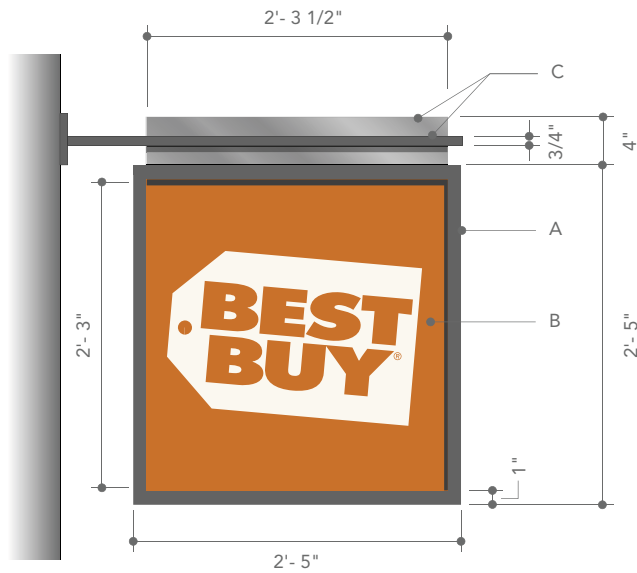
NOTES:

A • Fabricated painted aluminum cabinet with die-cut vinyl graphics and text; cabinet to receive 1/2" thick reveal divider.

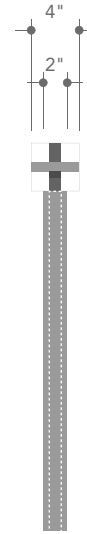
B • Poured-in-place concrete base with integral cast Mueller logo; concrete surface to be smooth with no texture. Sample to be submitted to fd2s for approval.

Fabrication Documentation

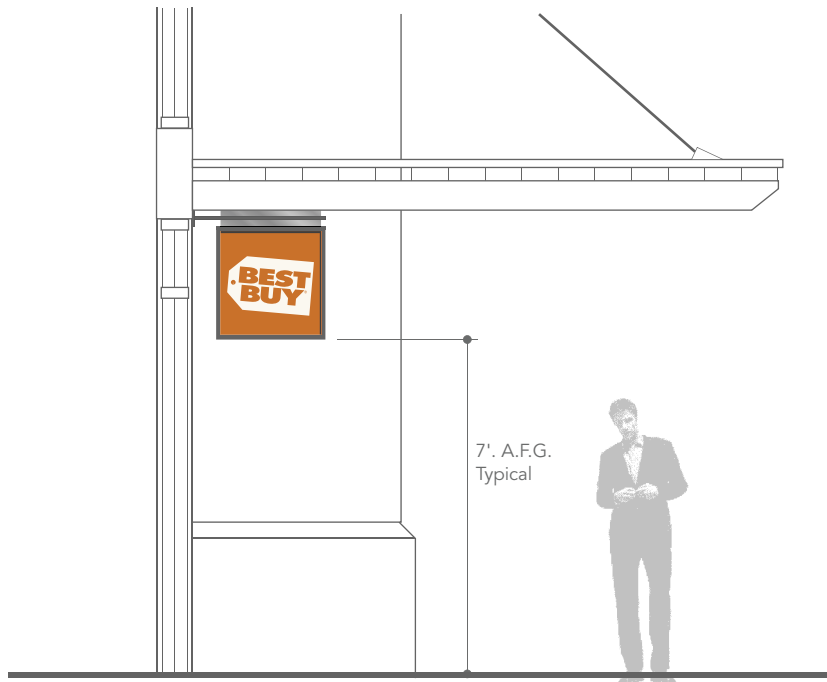
Drawings suggest an overall visual aesthetic. Fabricator's fabrication techniques should achieve the same visual intent. No visual changes will be acceptable.



2 Front View
scale: 3/4"=1'-0"



3 End View
scale: 3/4"=1'-0"



1 Mounting Elevation
scale: 1/4"=1'-0"

Fabrication Documentation

Drawings suggest an overall visual aesthetic. Fabricator's fabrication techniques should achieve the same visual intent. No visual changes will be acceptable.

NOTES:

A • Fabricated aluminum channel frame; finish to match pervasive metal in architecture palette (refer to specifications).

B • Painted aluminum panel insert with applied die-cut vinyl tenant logo both faces.

C • Aluminum header and bracket to match pervasive metal finish in architectural palette (refer to specifications).

Mueller Regional Retail Environmental Graphics Section 2 - Tenant Facade Signage



a
Major Anchors · Outboard, West Elevation

b

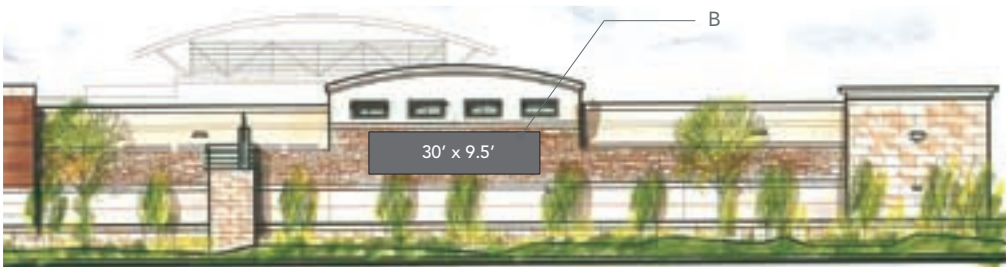
c



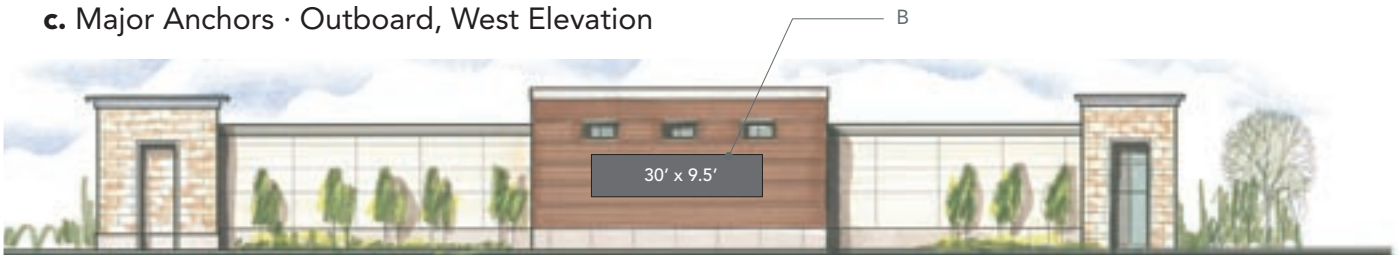
a. Major Anchor · Outboard, West Elevation



b. Major Anchor · Outboard, West Elevation



c. Major Anchors · Outboard, West Elevation



Major Anchor · Outboard, South Elevation

NOTES:

B · Individually mounted fabricated metal letterforms halo-illuminated letterforms paint to match Pantone Cool Gray 11.

Fields denote maximum area tenant sign can occupy; field is centered horizontally on facade



a

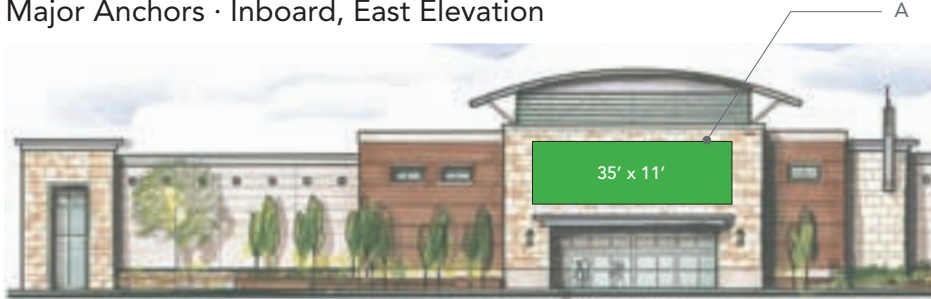


b

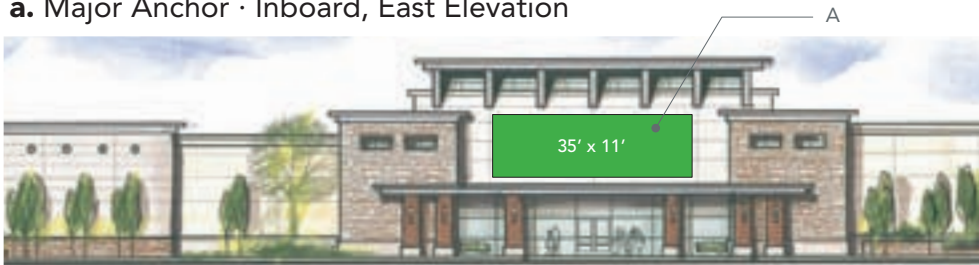


c

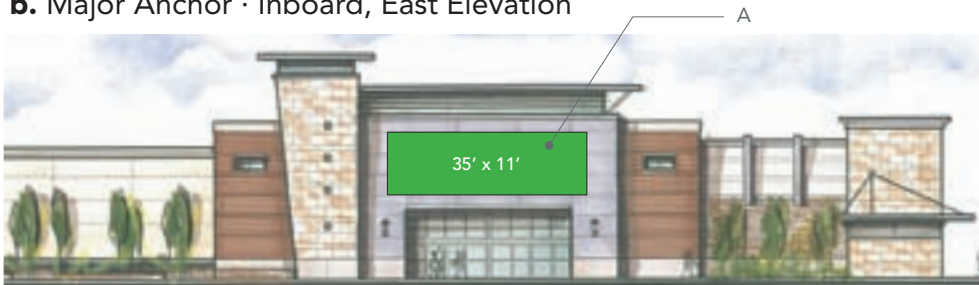
Major Anchors · Inboard, East Elevation



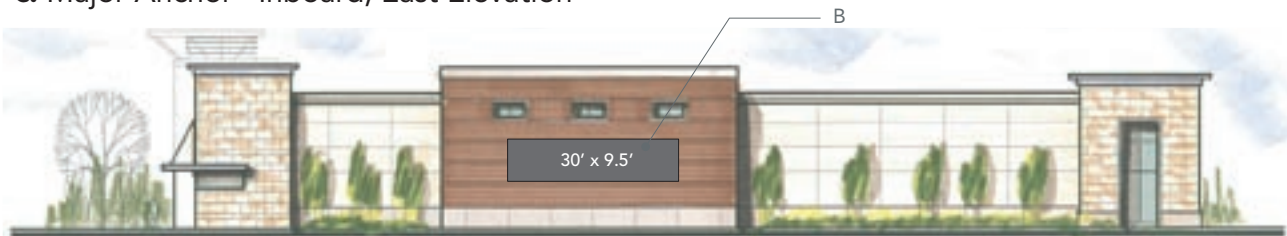
a. Major Anchor · Inboard, East Elevation



b. Major Anchor · Inboard, East Elevation



c. Major Anchor · Inboard, East Elevation



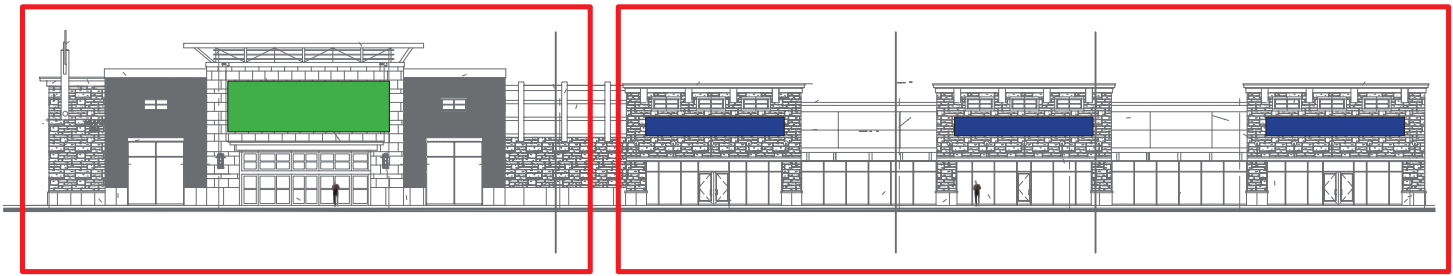
Major Anchor · Outboard, North Elevation

NOTES:

A • Individually mounted fabricated metal letterforms face-illuminated; color of letterforms are per tenant's corporate standards.

B • Individually mounted fabricated metal letterforms halo-illuminated; letterforms paint to match Pantone Cool Gray 11.

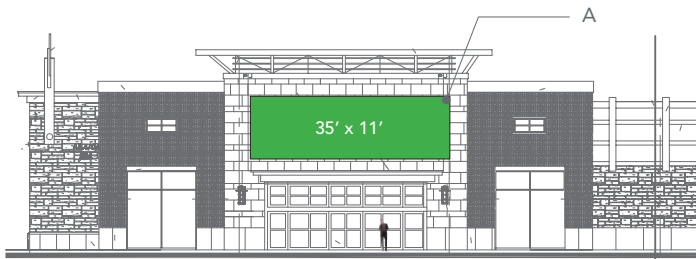
Fields denote maximum area tenant sign can occupy; field is centered horizontally on facade



a

b

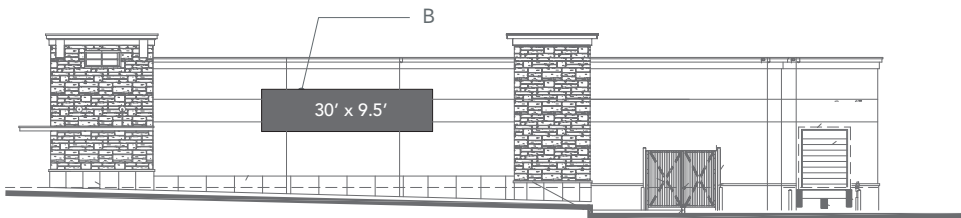
Shops A · Inboard, North Elevation



a. Shops A · Inboard, North Elevation



b. Shops A · Inboard, North Elevation



Shops A · Outboard, West Elevation



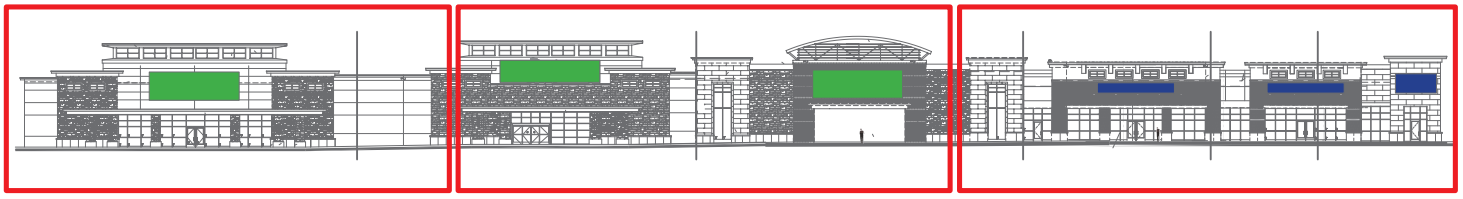
Shops A · Outboard, East Elevation

NOTES:

A · Individually mounted fabricated metal letterforms face-illuminated; color of letterforms are per tenant's corporate standards.

B · Individually mounted fabricated metal letterforms halo-illuminated; letterforms paint to match Pantone Cool Gray 11.

Fields denote maximum area tenant sign can occupy; field is centered horizontally on facade

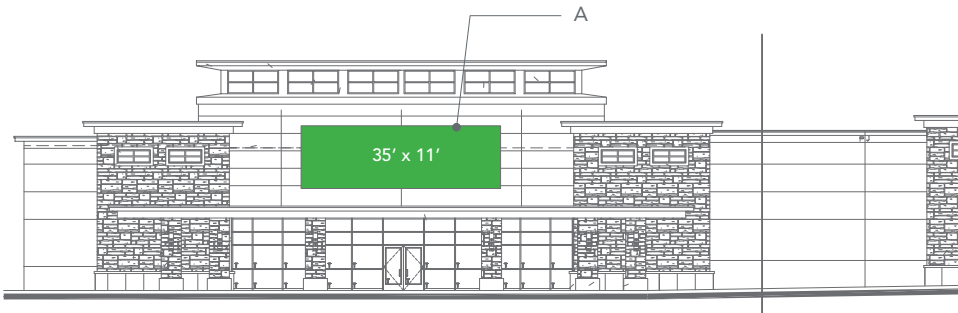


a

b

c

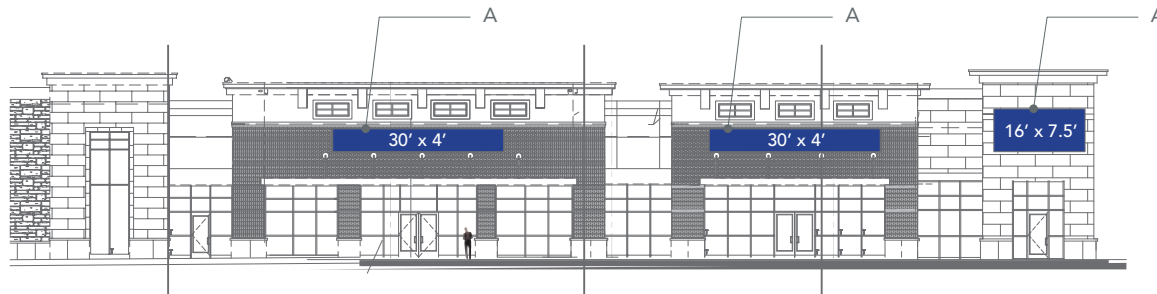
Shops B · Inboard, North Elevation



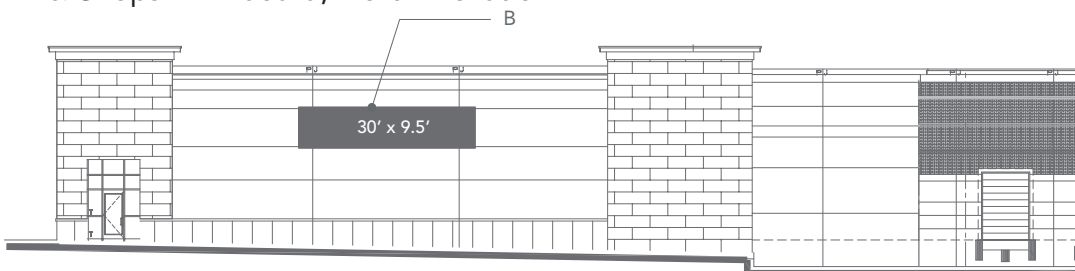
a. Shops B · Inboard, North Elevation



b. Shops B · Inboard, North Elevation



c. Shops B · Inboard, North Elevation



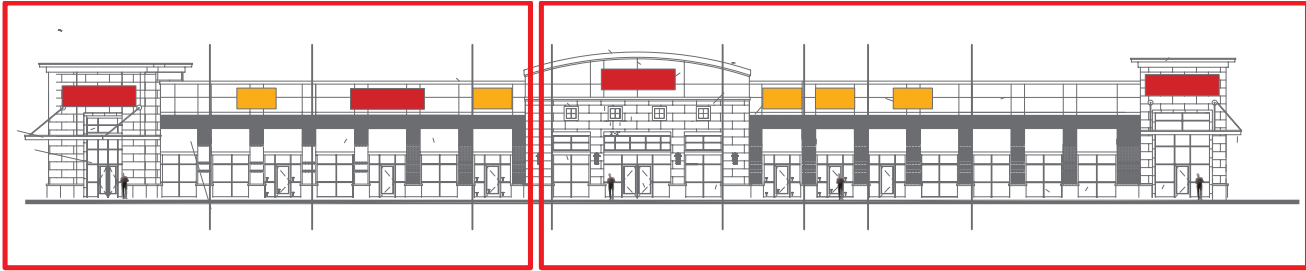
Shops B · Inboard, West Elevation

NOTES:

A • Individually mounted fabricated metal letterforms face-illuminated; color of letterforms are per tenant's corporate standards.

B • Individually mounted fabricated metal letterforms halo-illuminated; letterforms paint to match Pantone Cool Gray 11.

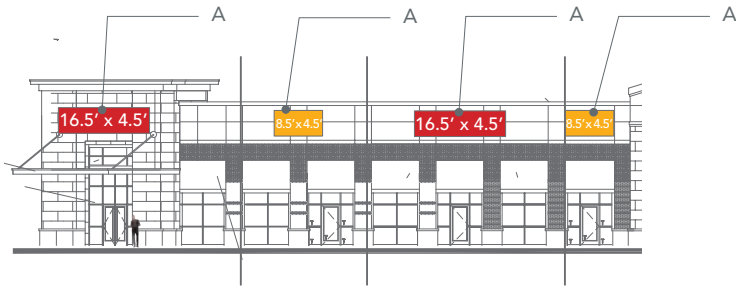
Fields denote maximum area tenant sign can occupy; field is centered horizontally on facade



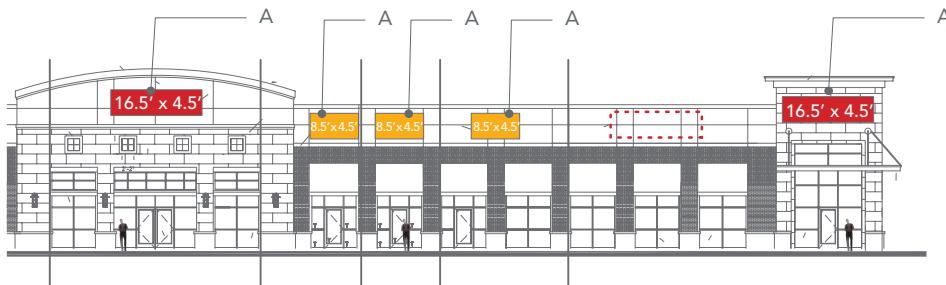
a

b

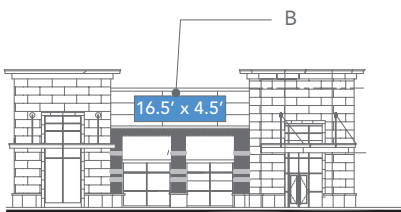
Shops C · Inboard, West Elevation



a. Shops C · Inboard, West Elevation



b. Shops C · Inboard, West Elevation



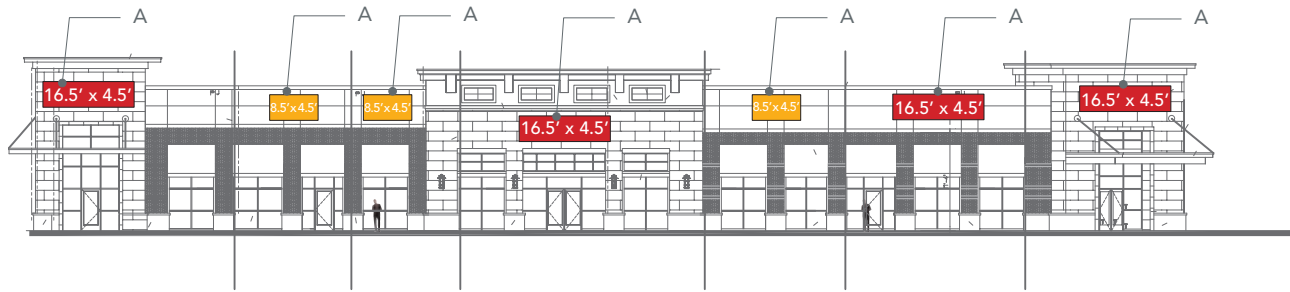
Shops C · Outboard, North Elevation

NOTES:

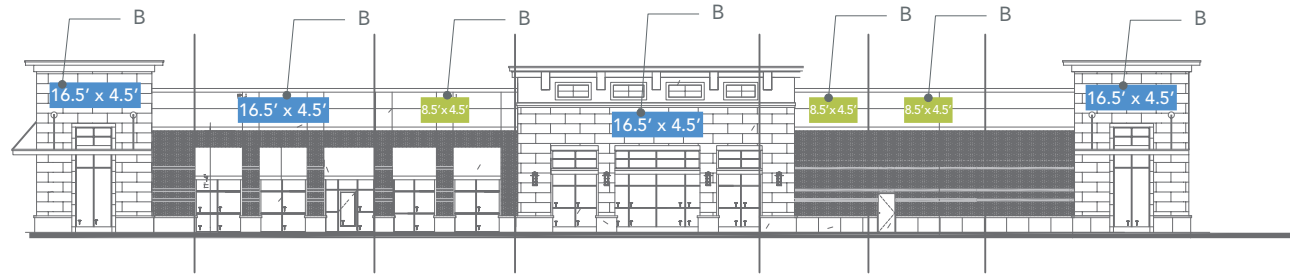
A • Individually mounted fabricated metal letterforms face-illuminated; color of letterforms are per tenant's corporate standards.

B • Individually mounted fabricated metal letterforms halo-illuminated; letterforms paint to match Pantone Cool Gray 11.

Fields denote maximum area tenant sign can occupy; field is centered horizontally on facade



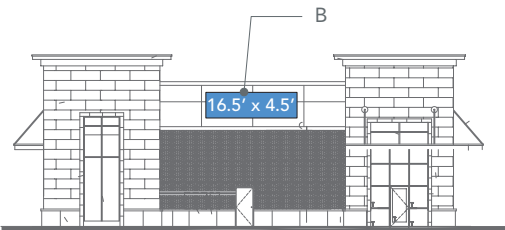
Rest D · Inboard, South Elevation



Rest D · Outbound, North Elevation



Rest D · Outbound, East Elevation



Rest D · Outbound, West Elevation

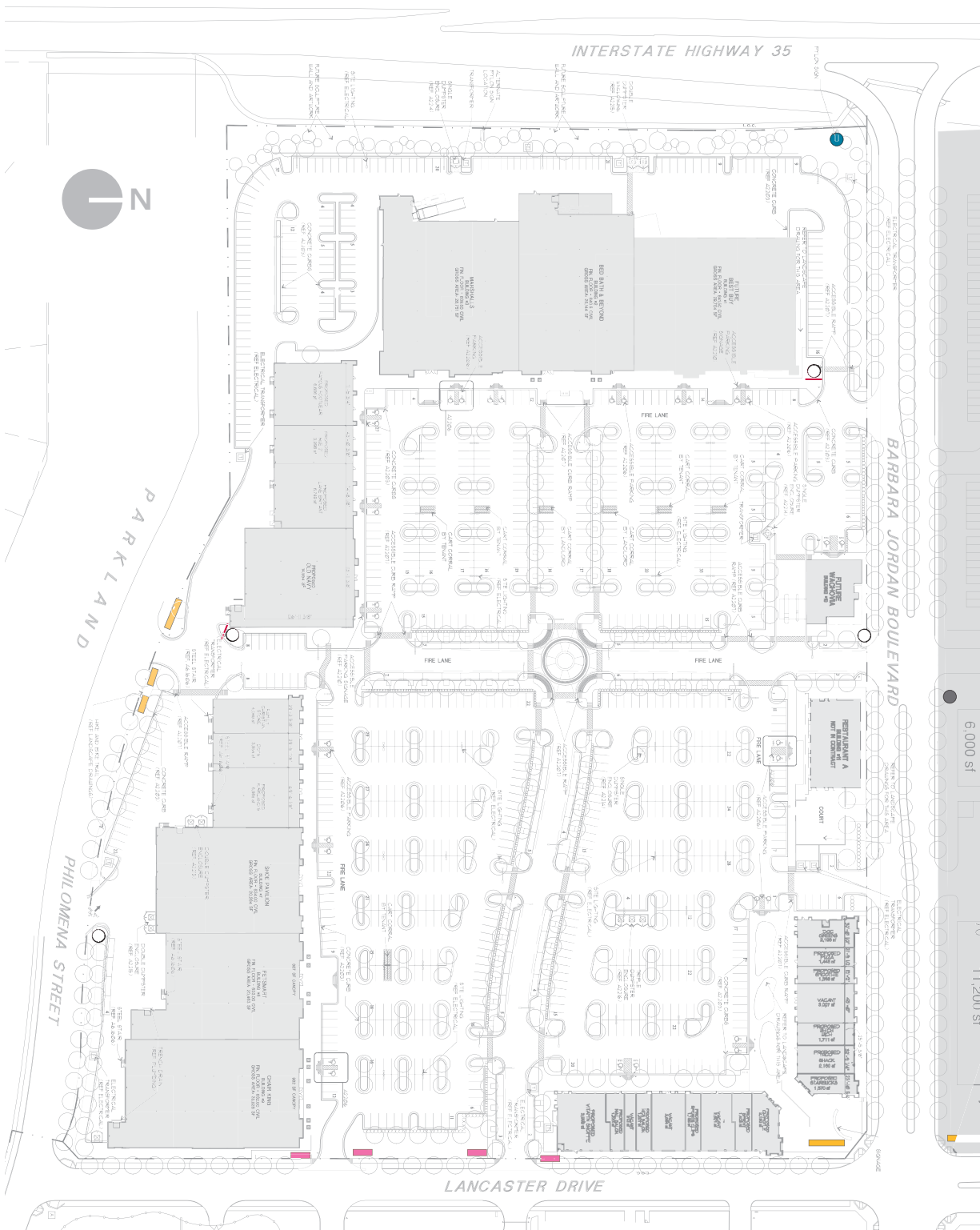
NOTES:

A · Individually mounted fabricated metal letterforms face-illuminated; color of letterforms are per tenant's corporate standards.

B · Individually mounted fabricated metal letterforms halo-illuminated; letterforms paint to match Pantone Cool Gray 11.

Fields denote maximum area tenant sign can occupy; field is centered horizontally on facade

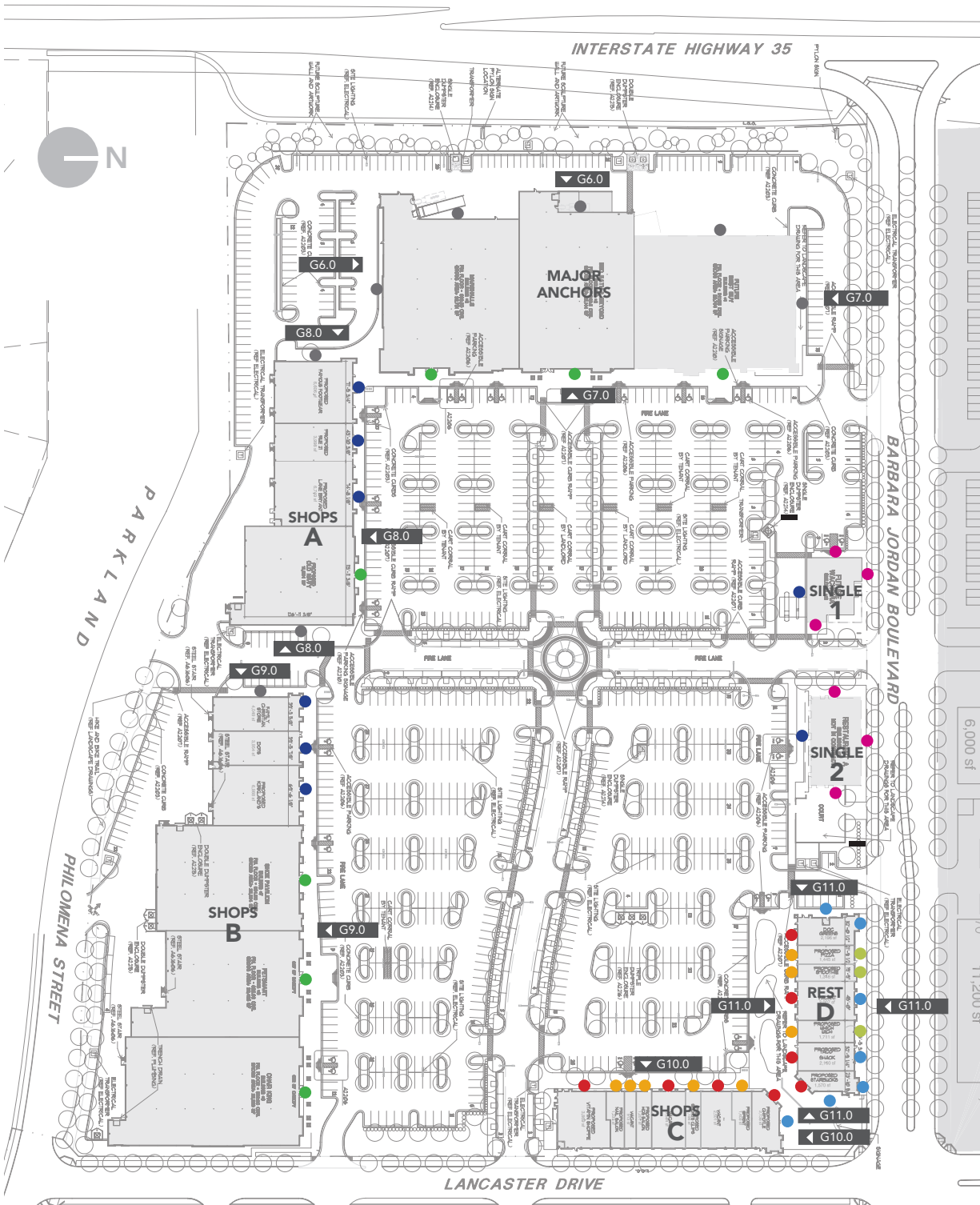
Mueller Regional Retail Environmental Graphics Section 3 - Sign Location Plan



Sign Type Color Key

- ST1 · Retail Pylon
- ST2a · Entrance Wall with Identification
- ST2b · Entrance Wall with Identification
- ST3 · Motorist Directional
- ST6 · Service Directional

For Tenant signage refer to Sign Location Plan on sheet G13.0



INBOARD TENANT IDENTIFICATION

TIER	Tenant Surface	Sign Size
1	14,000 sf - 30,000 sf	35 ft x 11 ft
2	3,900 sf - 8,000 sf	30 ft x 4 ft
3	2,000 sf - 3,899 sf & End Caps	16.5 ft x 4.5 ft
4	Up to 1,999 sf	8.5 ft x 4.5 ft

OUTBOARD TENANT IDENTIFICATION

TIER	Tenant Surface	Sign Size
5	3,900 sf - 30,000 sf	30 ft x 9.5 ft
6	2,000 sf - 3,899 sf & End Caps	16.5 ft x 4.5 ft
7	Up to 1,999 sf	8.5 ft x 4.5 ft
8	Single Tenant	20 ft x 4.5 ft
9	Freestanding Monument	6 ft x 2.6 ft

Mueller Regional Retail Environmental Graphics Section 4 - Planned Sign Program and Design Guidelines for Tenant Signage

PART 1 – SIGNAGE REVIEW, APPROVALS, PERMITS & INSTALLATION

1.1 Landlord Approval	16
1.2 City of Austin Approval	16
1.3 Permits.....	16
1.4 Installation	16

PART 2 – GENERAL PROJECT SIGNAGE GUIDELINES & CONDITIONS - ALL TENANTS

2.1 Conditions of Lease	17
2.2 Prohibited Signage	17
2.3 Permanent Window Signs	17
2.4 Temporary Promotional Signs	18
2.5 Address Signage	18

PART 3 – SIGN SPECIFICATIONS

3.1 Section Includes	19
3.2 Unit Prices	19
3.3 System Description	19
3.4 Submittals	19
Submittal Schedule.....	19
3.5 Coordination	20

PART 4 – PRODUCTS

4.1 Materials	21
4.2 Fabrication	22
4.3 Weather Proofing	22
4.4 Electrical Components.....	22
4.5 Protection	22

PART 5 – EXECUTION

5.1 Examination	23
5.2 Installation	23
5.3 Adjusting and Cleaning	23
5.4 Protection	23

PART 1 - SIGNAGE REVIEW, APPROVALS, PERMITS & INSTALLATION

All signage shall be reviewed and approved in writing by the Landlord for conformance with this Sign Criteria and overall design quality. Approval or disapproval of signage submittals shall remain the right of the Landlord.

1.1 LANDLORD APPROVAL:

- A. Prior to submission to the City of Austin and prior to fabrication and installation, Tenants shall submit for approval one (1) reproducible copy and three (3) additional attachment. At least one (1) drawing of the signage must be in color. Tenant shall provide material and color samples board and, if available, photographs of proposed signage. All materials and colors are subject to approval in the field by the landlord. The plans must include the building façade to scale, the depiction of the signage on the building to scale, a site plan indicating the location of the Tenant within the project, and construction specifications and details of the proposed signage.
- B. If the plans submitted to the Landlord are not acceptable or require revisions, they must be resubmitted for approval unless approved "with conditions."
- C. After plans are approved by the Landlord, one (1) set of the approved submittal with samples shall be retained by the Landlord and two (2) sets of plans will be returned to the tenant. One (1) approved set shall be included as part of the Tenant's submittal to the City of Austin.

1.2 CITY OF AUSTIN APPROVAL:

- A. The Tenant will be responsible for contacting the City of Austin for necessary submittal requirements and obtaining approvals and necessary permits before installation of signage.
- B. If the City of Austin requires any changes in the submittal, the Tenant shall obtain Landlord's approval of the change prior to re-submittal, obtaining a sign permit and/or installation of signage.

1.3 PERMITS:

All permits for signage and installation that are required by the City of Austin shall be obtained by the Tenant or its representative at Tenant's expense prior to fabrication and installation.

1.4 INSTALLATION:

- A. All Signage shall be constructed and installed at Tenant's expense in strict accordance with Landlord's approved plan.
- B. Tenants shall be responsible for the installation and maintenance of their signage.
- C. The Tenant's Signage Contractor shall be licensed by the State of Texas and shall carry workman's compensation and public liability insurance against all damage suffered or done to any and all persons and/or property while engaged in the construction or erection of signage.
- D. Tenant's Signage Contractor shall repair any damage caused by his work. Damage that is not repaired by the Contractor shall become the Tenant's responsibility to correct.
- E. The Tenant upon request of the Landlord shall correct signage not in accordance with previously approved plans. If not corrected within thirty (30) days, signage may be corrected or removed by the Landlord at the Tenant's expense.

2.1 CONDITIONS OF LEASE:

Each Tenant is responsible for the design, fabrication, installation, maintenance and cost of electricity for their own signage.

The tenant or Landlord shall be responsible to provide the company responsible for the fabrication and installation of the signage a designated circuit from the electrical panel to the signage. Special circumstances and penetrations through walls and structures will be addressed on a case-by-case basis and must be approved and inspected by the Landlord.

Prior to termination or conclusion of a lease, the Tenant is responsible for the removal of their Signage. The storefront wall or fascia shall be patched and painted and returned to its original condition as it was prior to the installation of the Tenant's signage.

2.2 PROHIBITED SIGNAGE:

The following signage shall be prohibited within the project:

- A. Flashing, moving or scintillating light bulbs or effects.
- B. Window signage, other than those signs permitted elsewhere in this Sign Program.
- C. Signage employing luminous painted paper or cardboard signage.
- D. Paper, stickers or decals hung around or behind storefront glazing.
- E. Signage is not allowed on fabric awnings.
- F. Signage employing exposed raceways, ballast boxes or transformers.
- G. Temporary movable signs on walkways or in parking areas.

2.3 PERMANENT WINDOW SIGNS:

A. Purpose:

The purpose of permanent window signage is to provide an attractive and effective means of identification by the pedestrian for the following:

- 1. Name of business.
- 2. Taglines and symbols used by businesses.
- 3. Hours of operation.
- 4. Disabled, no smoking and other code signs.
- 5. Credit card acceptance logos.

Permanent window signage should be well organized and enhance the overall visual impact of the Center for the public. All signs or graphics within ten (10) feet of a window or storefront that can easily be seen from the exterior shall be considered window signage. Exceptions shall be considered on a case-by-case basis only if they meet the overall design intent consistent with the store and overall project design for Mueller.

B. Quantity:

Only the area of permanent window signs identifying the Tenant name shall be subject to the maximum allowable sign area applicable to that Tenant.

C. Location:

Permanent window signs must be located within the glass panel area, with no part of the sign within six (6) inches of the window mullion or frame. No window signs shall be displayed on the storefront doors, or the glass areas directly above the doors, except addresses (see 2.5 Address Signs).

All windows signs must be applied to the inside of the glass. The location of all window signs must be approved by the Landlord.

D. Size:

Permanent window signage shall be compatible with glass dimensions and window mullion locations. The maximum area for all window signs (per-

manent and temporary) shall be no more than twenty-five percent (25%) of the window panel area.

E. Location:

Sign content shall be consistent with Tenant's overall graphics and identify package. Sign content and layout shall be subject to approval by the Landlord.

F. Materials:

Permanent window signs shall be limited to the following:

1. Individual vinyl or professionally painted letters or logos applied directly to the surface of the glass.
2. Sand blasted or etched effects applied to glass.
3. Metallic leafs applied to glass.

2.4 TEMPORARY PROMOTIONAL WINDOW SIGNS:

Tenants are allowed temporary or promotional window signage to convey information announcing retail sales events, seasonal/stock promotions and community activities, or a condition of short and limited duration. Temporary promotional window signs may be displayed for a cumulative period no greater than thirty (30) days each calendar year. Landlord approval is required prior to displaying each promotional window sign.

Tenants wishing to replace temporary promotional window signage on a regular basis may submit to the Landlord a proposed changing temporary promotional window sign program. The approved program will allow for replacement of temporary signs on a regular basis without the necessity of obtaining a separate approval for each new sign. The changing window sign program must also be consistent with the standards for permanent window signs. (see section 2.3 Permanent Window Signs)

A. Location:

A temporary window sign that extends from one panel of glass to another to convey a single message shall be allowed as long as it does not exceed the maximum allowable sign area for temporary promotional window signs.

B. Size:

Temporary or promotional window signage shall be compatible with glass dimensions and window mullion locations. Temporary signs shall be limited in size by the maximum allowable sign area of twenty-five percent (25%) of the overall window area for all signage. Sign area tabulation for all window signage (temporary and permanent) shall be reviewed and approved by the Landlord prior to installation.

C. Content:

Temporary sign content shall be consistent with Tenant's overall graphics and identity package.

D. Materials:

Temporary signs are generally vinyl, cloth, canvas and other lightweight materials. Colors and materials shall be subject to approval by the Landlord. Signs shall not be illuminated, luminescent or fluorescent.

2.5 ADDRESS SIGNAGE:

Each retail Tenant may have one (1) address displayed for the purposes of identification on primary business frontage. A six-inch high address identification with contrasting background shall be centered in the glass area directly above the door(s). A panel located at the rear service doors will include the address, name of store and receiving hours.

Tenant shall contact the City of Austin for specific requirements of Address signage.

PART 3 - SIGN SPECIFICATIONS

3.1 SECTION INCLUDES:

- A. Signage must be constructed and installed to meet or exceed all applicable codes and City requirements.
- B. All penetrations of the building structure required for signage installation shall be neatly sealed and watertight. Color and finish of attachments and sealants shall match adjacent exterior finishes.
- C. Complete interior and exterior signage work, including permits, supports and mounting hardware and electrical connections, is included in the Contract Sum.

3.2 UNIT PRICES:

Furnish cost information for future purchases, guaranteed up to 1 year from substantial completion for all sign types. Include costs for items ordered individually as well as minimum order required to obtain price break.

3.3 SYSTEM DESCRIPTION:

- A. Provide "Sign" types of the size, material, images and arrangements made up of special and standard components and construction as shown on Drawings and specified.
- B. The Drawings depict general sign configuration, typography, graphic layout, and sign placement.
- C. Verify sign and copy length for proper fit. Notify owner's representative in writing of any discrepancies prior to fabrication.
- D. Materials shall be new stock, free from defects impairing strength, durability and appearance.
- E. Letters and signs to be structurally designed to resist 30PSF wind loads and thermal movements, without distortions or excessive deflections. Letter and sign fabrication is to be a complete system including stiffeners, fasteners, welding, sealants, jointing, miscellaneous pieces and material thickness required to form high quality workmanship. Connections, angles, shapes and details shown are suggestive and are to be sized, reinforced and detailed as required to meet design criteria. Details, anchors or devices not shown are to be submitted to owner's representative for review before fabrication.
- F. All fabrication and installation shall be in accordance with highest standards of the trade. All signs and components shall be complete and free from visual and mechanical defects, such as unfilled and unfinished seams or exposed fasteners.

3.4 SUBMITTALS:

- A. Manufacturer's Data: Submit manufacturer's product data sheets for each product or system.
- B. Shop Drawings: Prepare detailed shop drawings for each sign, including full size sections of typical members. Indicate fabrication joints, seams and fasteners and copy composition including letter and line spacing. Exact identification of all paints shall be noted on the Shop Drawings, together with data describing the method of applications, if other than "air" drying.
- C. Samples: Submit three sets of samples of each finish, color and lettering type required. Samples shall be of suitable size to accurately render these qualities.
- D. Submittal Schedule: Provide submittals as specified in the following schedule.

Sign Types	Required
------------	----------

ST1, ST3, ST7, ST8	Structural drawings sealed by registered engineer. 6"x 6" color sample for each color on actual material as noted in drawings. 12"x12" sample of each non-painted material. Cut sheet of proposed lighting system. Shop drawings.
--------------------	---

- E. Maintenance Instructions: Include written instructions for removal of signs attached to wall surfaces, including recommended methods for removal of residual adhesives.

3.5 COORDINATION:

- A. Coordinate scheduled signage locations with field measurements.
- B. Coordinate signage locations with existing mechanical, electrical and plumbing elements.
- C. Field-verify final signage locations with fd2s and owner's representative before installation.

PART 4 - PRODUCTS

4.1 MATERIALS:

A. General:

- 1. Metal Surfaces: For the fabrication of general metal work that will be exposed to view, use only materials that are smooth and free of surface blemishes, including pitting, roughness, seam marks, and trade names. Unless the surfaces are to be painted, do not use materials with stains and discolorations.
- 2. Surface Flatness: For exposed items of work that include plain flat surfaces in width of more than 50 times the metal thickness, provide sheet stock from the mill that has been stretcher leveled to the highest standard of flatness commercially available.

B. Aluminum: AA Alloy 5052 or 6061T6 or as recommended to suit required service and finish.

C. Coatings:

- 1. Acrylic Polyurethane: Provide acrylic polyurethane consisting of ultra-violet inhibitors that are lightfast and weather-, abrasion-, and wear-resistant. Provide one of the following:
 - a. Matthews Paint, PPG Industries
- 2. Polyurethane Enamel: Provide polyurethane enamel consisting of ultra-violet inhibitors that are lightfast and weather-, abrasion-, and wear-resistant. Provide one of the following:
 - a. Chemglaze, Hughson Chemical Division, Lord Corp.
 - b. Imron, DuPont de Nemours & Co.
- 3. Translucent Sign Coating: Provide "Gripflex" manufactured by Wyandotte Paint Products Co.

D. Fasteners: Same base metal and finish as the metal work. For machine screws, comply with FS FFS92. For applications under 7'-0" from finished grade/floor use Flat Head Socket Cap or Flat Head Torx Drive screws and above 7'-0" from finish grade/floor use Phillips Flat Head unless otherwise noted in drawings. Where exposed and surrounding surface is painted, screws should be in-filled and painted to match surrounding surface. Where exposed and surrounding surface is not painted, raw unfinished material or clear coated metal, use stainless steel screws unless otherwise noted on drawings.

E. Anchors and Inserts: Furnish inserts to be set in concrete work, or provide other anchoring devices as required for the installation of signs as detailed on Drawings. Furnish cast iron or malleable iron ore hot dip zinc coated inserts. Provide toothed stainless steel or zinc-and-chrome-plated high carbon steel expansion bolt devices for drilled-in-place anchors.

- 1. Universal Fastenings Corporation "Thunderstud"
- 2. Hilti Fastening Systems "Kwik Bolt"
- 3. Ramset "Dynabolt"

F. Steel:

- 1. Materials:
 - a. Steel pipe: ASTM A53, Type E.F., or G at fabricator's option, Grade A, black finish, unless otherwise shown as galvanized standard weight (Schedule 40).

b. Steel sheet for cold forming: ASTM A 569, hot-rolled sheet steel of commercial quality, pickled and oiled, free of defects that would impair the work.

c. Galvanized steel sheet: ASTM A 526, commercial quality.

2. Finishing:

a. Primer finish: Provide one of the following, unless steel indicated to receive galvanized finish:

(1.) Dimetecote No. 4; Arercite Corp.

(2.) Tnemec, Zinc 92; Tnemec Co. Carbo Zinc II; Carblinc Co.

b. Baked enamel finish: Manufacturer's standard baked enamel finish.

G. Adhesives:

1. Foam tape: 1/16" (unless otherwise noted) foam applied liberally to back of plaque.

2. Silicone adhesive: Ready to use, high performance adhesive. General Electric GE1200 sealant, translucent SCS 1201, as recommended by manufacturer for bonding condition.

3. Film tape adhesive: 4 mil (0.1 mm) thick, double-faced pressure sensitive film tape. No. 415; 3M Co.

4. Epoxy: Two component thermosetting epoxy adhesive with 100% solid content. NP - 428; Miracle Adhesive Corporation.

5. Poxo-ment: Acid Alkali resistant epoxy Kaiser Brand. C. E. Kaiser, (P.O. Box 94169, Houston, Texas).

H. Silk Screen Ink: Enamel inks shall be in colors and sheen as scheduled on drawings, manufactured by Naz Dar Co., (Chicago, Illinois).

I. Paint: Preparation, primer and semi gloss acrylic base finish coats to provide weather resistant finish guaranteed for one (1) year against pitting, peeling, or fading. Enamel coating provided for use on surfaces shall have properties of moisture-resistance in all weather conditions and shall be guaranteed for one (1) year against pitting, peeling or fading.

1. Provide primer coats or other surface pretreatments, where recommended by paint manufacturer.

2. No paints that will fade, discolor or delaminate as a result of ultraviolet light, heat, cold, or humidity shall be used.

3. Paints required for lettering, including silk-screens and imprinted surfaces, shall be a type made for the surface material on which it is applied and recommended by the manufacturer of the paint.

J. Acrylic: Furnish acrylic in the thickness and finishes as specified and as manufactured by the one of the following:

1. Rohm and Haas

2. Mitsubishi Rayon Co., LTD.

K. Flexible Substrate for Flexfase System: 3M Panaflex series 940GPS should be used in addition to a 3M Scotchcal Matte Overlamine 3642GPS for protection.

L. Vinyl Die-Cut Characters: Pre-spaced die-cut letters of 3M Scotchcal film in 3.5 mil thickness, selected from standard colors; Gerber Scientific or Avery Graphics; Typeface and spacing as noted on Drawings.

M. Protective Finish: For metal surfaces noted to receive protective clear finish, apply two coats clear acrylic lacquer. Coating to be compatible with inks or paints applied to surfaces.

N. Reflective Vinyl: All reflective vinyl shall be Engineer Grade unless otherwise noted on drawings.

O. Metal Mesh: McNichols Metals, Lock Crimp. Openings to be .375" x .375," 2 mesh per linear inch, diameter of wire: .092, width of opening: .4080, open area percent: 66.6%, weight per 100 sq. ft: 110.2lbs.

4.2 FABRICATION

- A. All visible joints shall be ground, filled and finished flush and smooth with adjacent work. Such seams shall be invisible after final finish has been applied. Spot-welded joints shall not be visible on exterior of signs after final finish has been applied. No gaps, light leaks, waves, or oil canning will be permitted in the work.
- B. Execute fabrication in such a manner that all edges and corners of finished letter forms and sign substrates are true and clean. Letterforms and signs with rounded positive and negative corners, nicked, cut or ragged edges, bent or distressed edges will not be accepted.
- C. Finished surfaces shall have a smooth, even finish free of irregularities.
- D. Execute silkscreen printing from photo-screens or negatives prepared per specification and drawings by signage fabricator. Pattern cut screens may be used where non-repeat copy is required; however, copy mask shall be equivalent to photo-screen quality. Do not use images on Contract Documents as camera-ready art.
- E. Execute silkscreen printing in such a manner that edges and corners of finished letterforms are true and clean. Letterforms with rounded positive or negative corners, edge buildup or bleedings, will not be accepted.
- F. Align letterforms to maintain a baseline parallel to the sign format. Margins must be maintained as specified by sign type layouts.
- G. Letterform edges shall be sharp and clean with no edge buildup or bleeding. Surfaces of letterforms shall be without pinholes.
- H. Cut-out copy shall be cut from rolled sheet of specified gauge, all edges of copy to be perpendicular to copy face, ground smooth and polished to finish as noted on Drawings and schedules.
- I. Welding shall be of the correct type to minimize permanent distortions of flat surfaces. Remove welding flux, oxides, and discolorations by pickling or grinding, so that these areas match the finish of the adjacent areas. Repair damage caused by fabrication by grinding, polishing or buffing.
- J. Primer coats or other surface pre-treatments, where recommended by the manufacturer for paints, shall be included in the work.
- K. Apply paints evenly without pinholes, orange peeling, scratches, application marks, and other imperfections.
- L. Apply adhesives in accordance with recommendations of the manufacturer of the material specified to be laminated or adhered. Visible joints shall be free from air bubbles and other defects.

4.3 WEATHER PROOFING:

- A. Water & Humidity: All exterior sign cabinets shall be sealed so as to prevent rain water contamination. Proper venting and drainage shall be provided for humid or wet locations for all exterior or interior sign cabinets. All exposed metal surfaces shall be protected from oxidation.
- B. Heat & Cold: All material used shall be rated to withstand typical hot or cold conditions associated with the region in which they will be installed.
- C. Sign fabricator shall not be held liable for any damages caused by natural disasters such as, but not limited to, tornados, hurricanes, earthquakes, flooding and the like, unless otherwise noted on the drawings.

4.4 ELECTRICAL COMPONENTS:

- A. All electrical signage shall bear the Underwriters Laboratories (UL) label of approval.
- B. All raceways, transformers, electrode boxes, switches, wiring, conduit and access hatches shall be concealed. Electronic components that produce or radiate heat shall be properly vented in accordance with the manufacturer's guidelines. Care should be taken to select equipment that is rated to withstand typical environmental conditions associated with the region or location in which they will be installed.
- C. Coordinate electrical components and demands with building power supplies.
- D. Tenant's electrified signage shall be connected to the Tenant's house panel and controlled by a time clock or energy management system.

4.5 PROTECTION:

Protect exposed finishes by covering with adhesive paper or other suitable covering prior to shipment from the fabricator or finishing shop.

PART 5 - EXECUTION

5.1 EXAMINATION:

- A. *Examine signs for evidence of damage at the site before installation.*
- B. *Examine the conditions and substrates under which the installation is to be performed for unsatisfactory conditions. Do not proceed with the work until the unsatisfactory conditions have been corrected or subsequent change of location has been approved by the owner's representative.*

5.2 INSTALLATION:

- A. *Provide custom manufactured sign assemblies, components, completely fabricated and finished at factory before delivery to site. Fit and assemble the Work at the shop to the greatest extent possible. No site application or finishing will be permitted except for touch-up. Exposed fasteners on finished faces will not be allowed, unless specifically indicated. Waviness and oil canning of surfaces is not acceptable. Minimum material thickness is to be 0.090 inches. Conceal wiring, conduit and other electrical items within sign enclosures.*
- B. *Install letter and sign units and components at locations shown or scheduled, securely mounted with concealed fasteners, unless otherwise shown. Attach signs to substrates in accordance with manufacturer's instructions, unless shown. Provide anchorage and fitting.*
- C. *Install, level and plumb at the proper height. Cooperate with other portions of the Work for installation of sign units to finish surfaces.*
- D. *Protect adjacent surfaces from damage during installation.*

5.3 ADJUSTING AND CLEANING:

- A. *Following installation, remove all traces of visible tapes, adhesives, wrappings or refuse from the installation.*
- B. *Repair damaged signing surfaces and materials to restore to original condition and appearance. Replace materials that cannot be properly restored.*

5.4 PROTECTION:

- A. *Protect signs installed in incomplete areas where construction is still under way.*

Mueller Regional Retail Temporary Commercial Signage Bid Documentation

TYPOGRAPHY: AVAILABLE IN PC OR MAC FORMAT FROM WWW.MYFONTS.COM

ENGRAVERS' GOTHIC REGULAR

A A B B C C D D E E F F G G H H I I J J K K L L M M
N N O O P P Q Q R R S S T T U U V V W W X X Y Y Z Z
O I 2 3 4 5 6 7 8 9

ITC NEW BASKERVILLE STD ROMAN

A a B b C c D d E e F f G g H h I i J j K k L l M m
N n O o P p Q q R r S s T t U u V v W w X x Y y Z z
0 1 2 3 4 5 6 7 8 9

ITC NEW BASKERVILLE STD ITALIC

*A a B b C c D d E e F f G g H h I i J j K k L l M m N n
O o P p Q q R r S s T t U u V v W w X x Y y Z z
0 1 2 3 4 5 6 7 8 9*


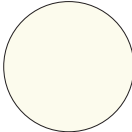
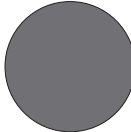
PROJECT LOGO

COLOR: PMS 179



COLOR PALETTE

MAIN PROJECT COLORS

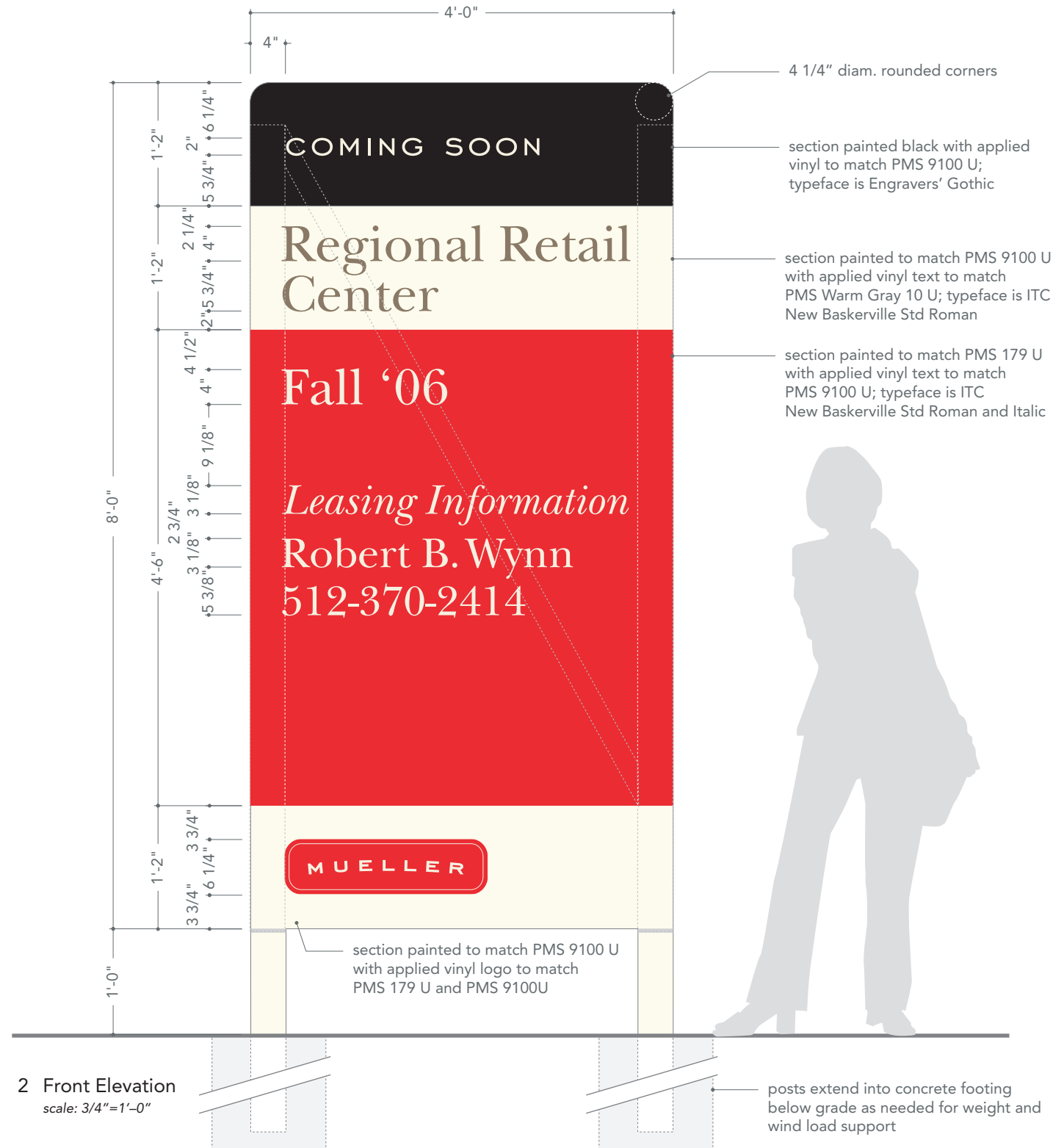
			
PMS 179U	PMS 9100 U	PMS Cool Gray 11 U	Black
C 0 M 79 Y 100 K 4	C 0 M 0 Y 7 K 1	C 0 M 2 Y 0 K 68	C 0 M 0 Y 0 K 100

COLORS AS PRINTED HERE ARE APPROXIMATE AND NOT INTENDED FOR MATCHING. PLEASE REFER TO ACTUAL PANTONE COLOR CHIPS FOR ACCURATE COLOR MATCHING.

1 Top View
scale: 3/4"=1'-0"

4" x 4" wood posts and 2" x 2" lateral bracing as needed

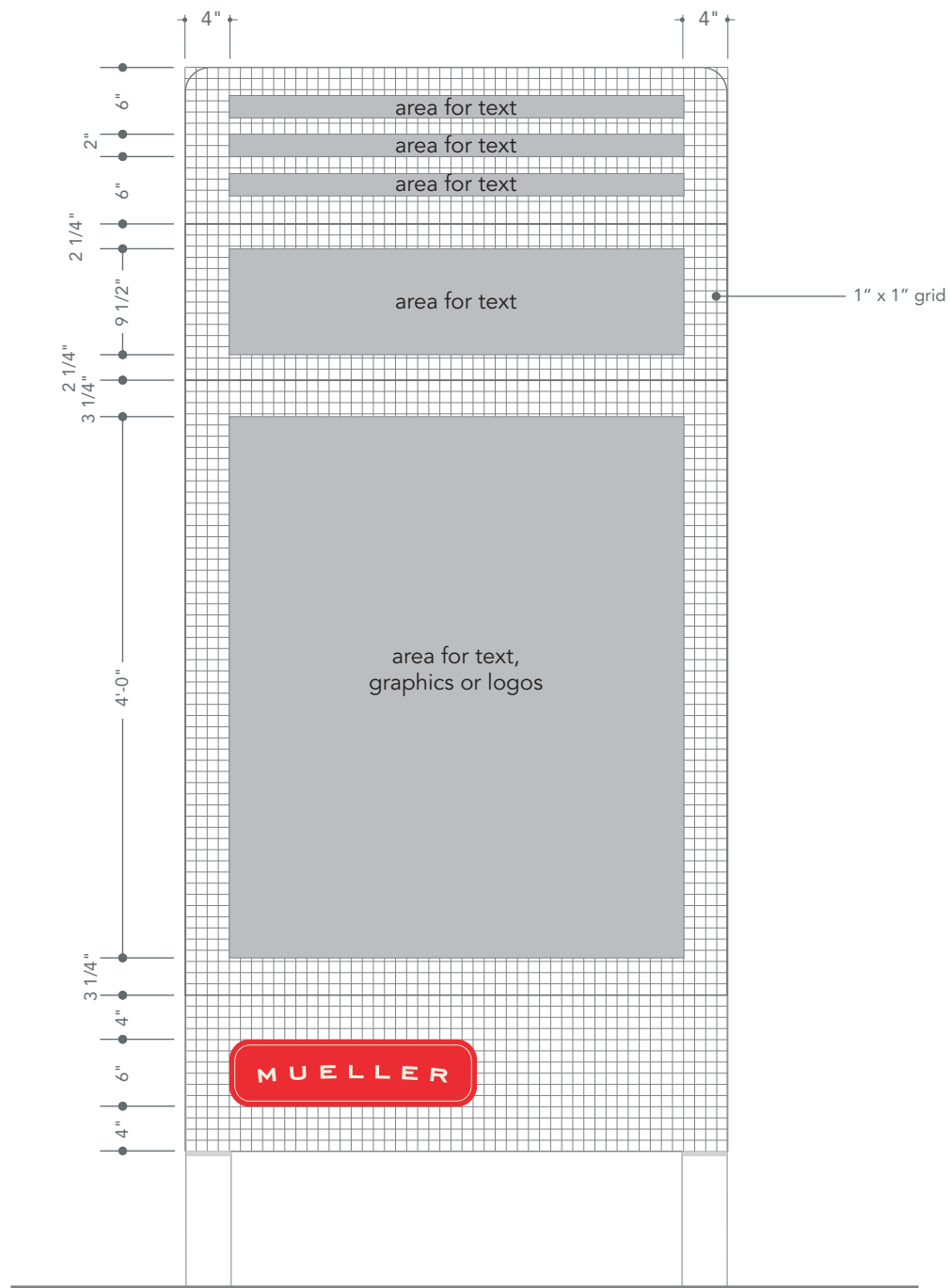
3/4" MDO plywood face secured to wood posts; returns paint to match faces and back to match PMS 9100 U



2 Front Elevation
scale: 3/4"=1'-0"



3 Additional Layout
scale: 3/4"=1'-0"



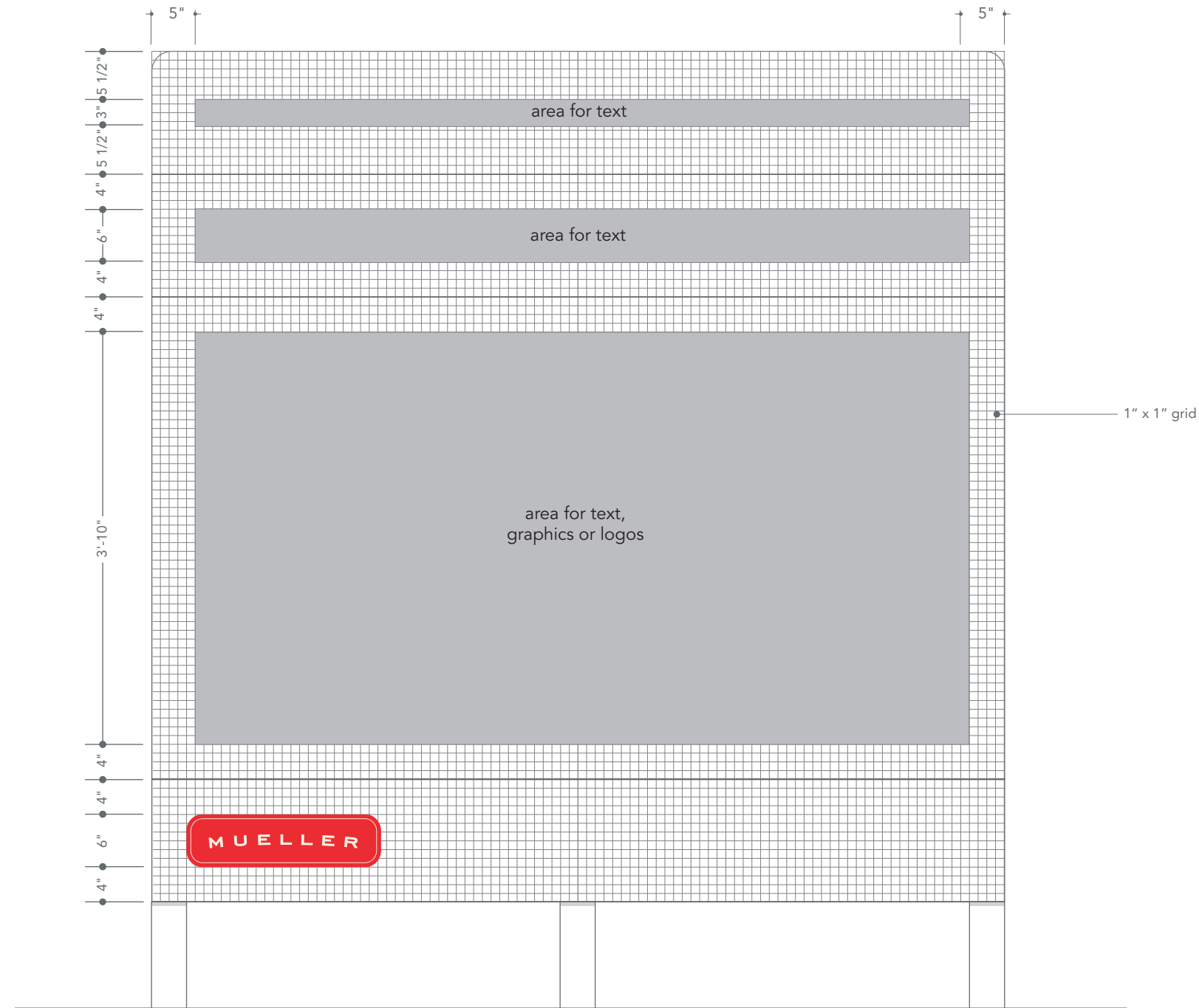
1 Grid Layout
scale: 3/4"=1'-0"

1 Top View
scale: 3/4"=1'-0"

4" x 4" wood posts and 2" x 2" lateral bracing as needed

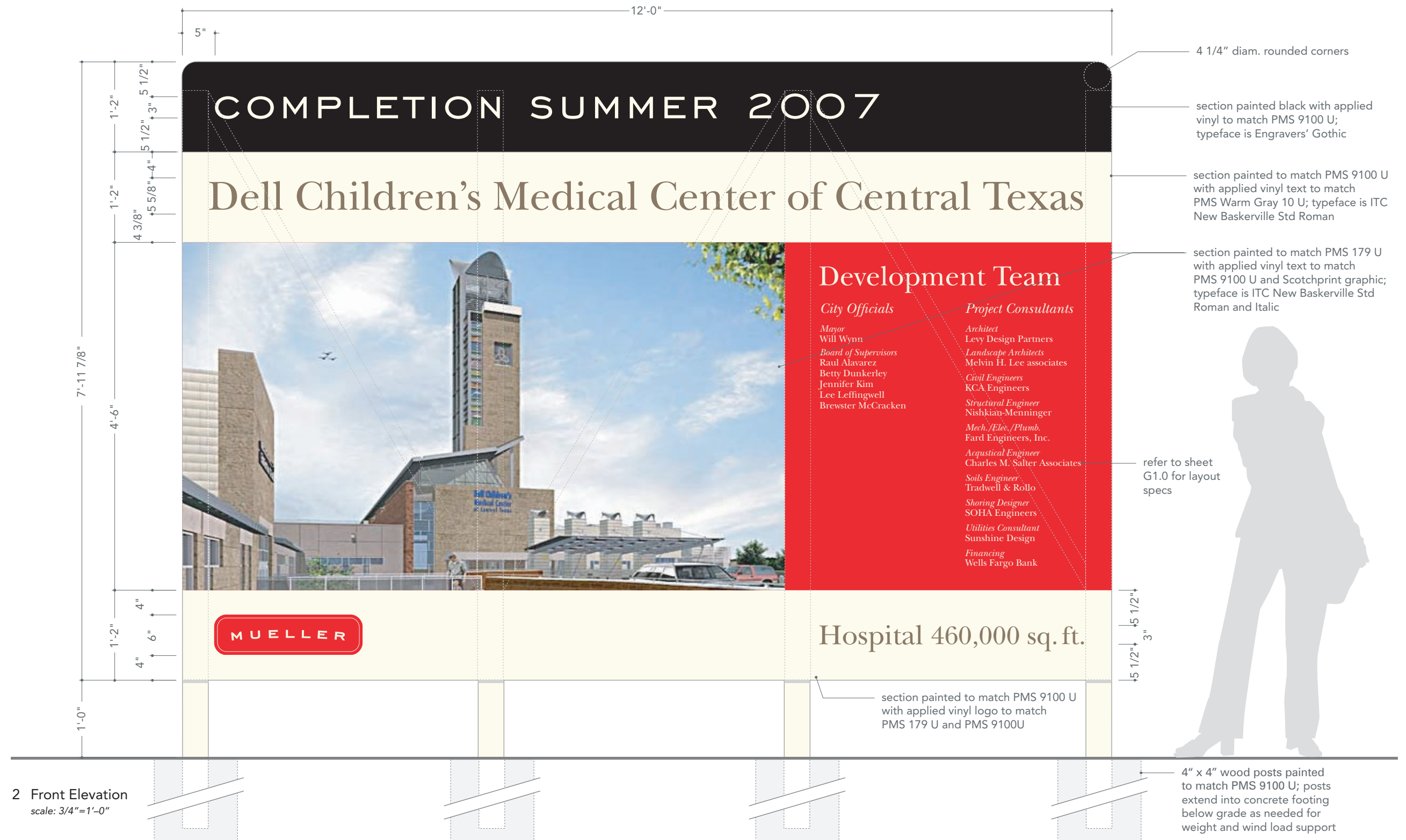
3/4" MDO plywood face secured to wood posts; returns paint to match faces and back to match PMS 9100 U



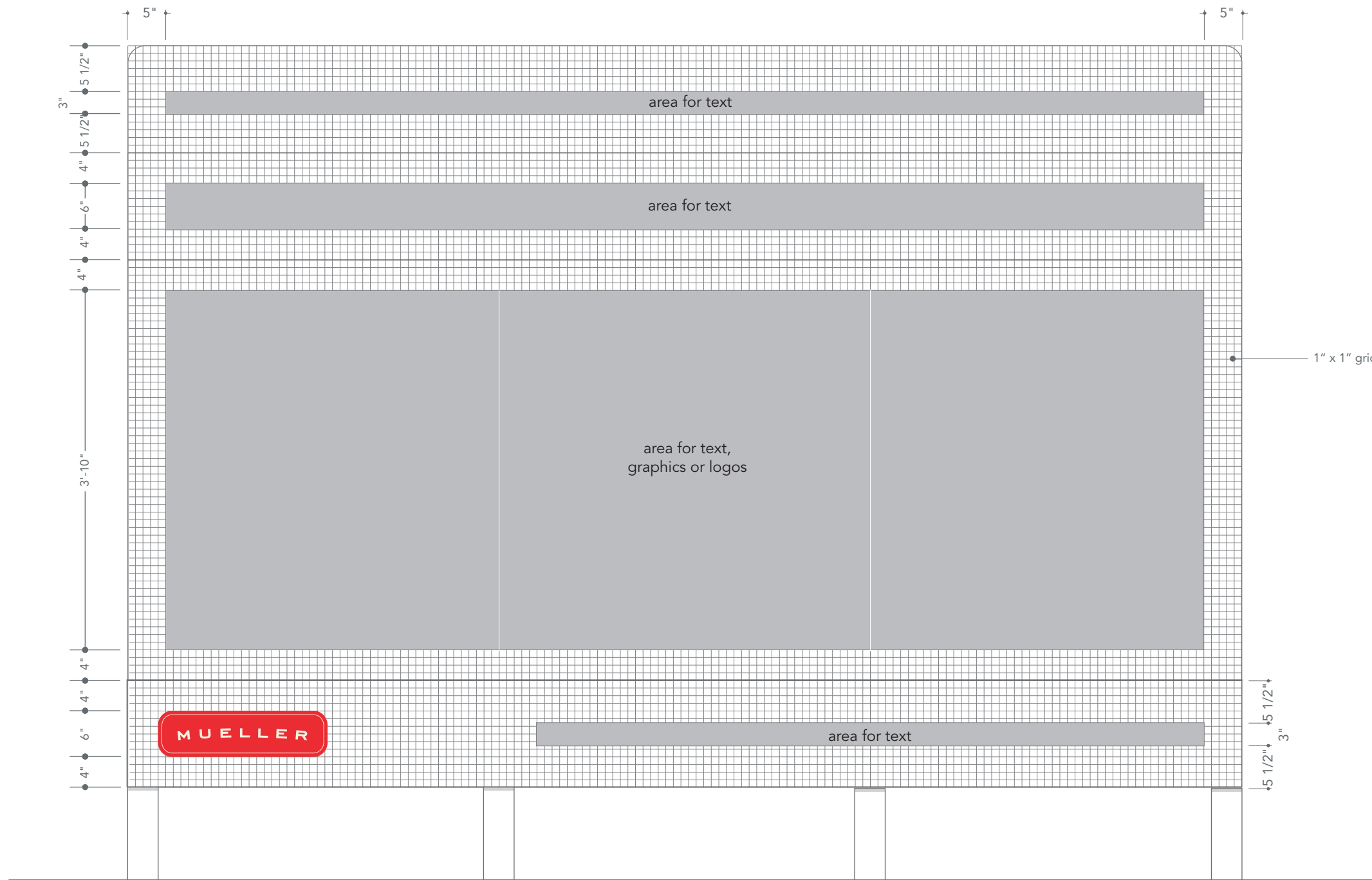


1 Grid Layout
scale: 3/4"=1'-0"

1 Top View
scale: 3/4"=1'-0"



2 Front Elevation
scale: 3/4"=1'-0"



1 Grid Layout
scale: 3/4"=1'-0"



1 Top View
scale: 3/4"=1'-0"



2 Front View
scale: 3/4"=1'-0"

